



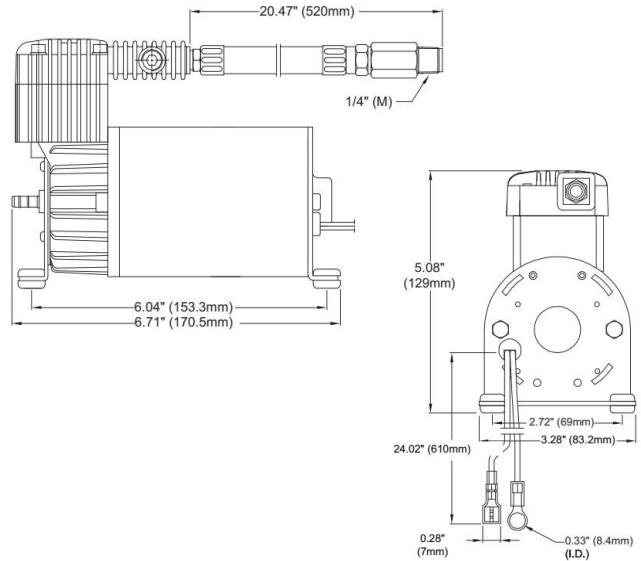
# 275C Compressor

**150 PSI / 2.03 CFM**  
**Max. Amp Draw: 20 Amps**  
**P/N 27520 CE**



The 275C air compressor has a max run time of 15 minutes and comes equipped with a stainless steel braided leader hose, check valve and remote air filter assembly. Mounting hardware is included.

**Please Note:** Use thread sealant for proper installation. Teflon tape is not recommended. Properly sealed, recommended torque for 1/8" is 10 ~ 11 ft. lbs. Recommended torque for 1/4" and 3/8" is 16 ~ 18 ft. lbs.



Please contact your representative for pricing.

**Included Parts:**

- Thermal Overload Protector
- Check Valve
- Vibration Isolators
- Mounting Hardware
- Stainless Steel Braided Leader Hose
- Air Line for Remote Mount Air Filter
- Remote Mount Air Filter Assembly
- (2) Replacement Air Filter Elements
- Installation Instructions

**Specifications:**

- 12-Volt
- Permanent Magnetic Motor
- Duty Cycle: **25% @ 100 PSI**
- Max. Working Pressure: **150 PSI**
- Max. Air Tank: **2.5 Gallon**
- Min. Ambient Temp: **-40° F**
- Max. Ambient Temp: **158° F**
- Net Weight: **5.2 lbs.**
- Ingress Protection Rating: **IP54**

**Recommended Components:**

- 0.5 Gallon Tank - P/N 91005;
- 1.0 Gallon Tank - P/N 91010, 91014;
- 1.5 Gallon Tank - P/N 91015
- 2.0 Gallon Tank - P/N 91022;
- 2.5 Gallon Tank - P/N 91025;
- 12V Relay - P/N 93940;
- Pressure Switches - P/N 90100, 90101, 90102;
- Pressure Switches with Relay - P/N 90110, 90111, 90113;
- Sealed Pressure Switches - P/N 90217, 90223, 90227

**Dimensions:**

(L) 6.5" x (W) 3.5" x (H) 4.5"

**Performance Data**

PSI	CFM	A	BAR	LPM	A
0	2.03	10	0	57.5	10
40	1.01	15	3	28.5	16
90	0.79	17	6	22.5	17
150	0.57	17	10	17.0	17

**Tank Fill Rates**

1.0 Gallon Tank	Fill Rate
0 to 145 PSI	1 min. 45 sec. (±05 sec.)
110 to 145 PSI	30 sec. (±03 sec.)
2.5 Gallon Tank	Fill Rate
0 to 145 PSI	4 min. 30 sec. (±10 sec.)
110 to 145 PSI	1 min. 35 sec. (±05 sec.)

**Applications include:**

